



# Playground Park

547 Mill Street  
*Master Site Plan Concept 11/2024*

**New Playground & Small Picnic Pavilion**-Install a new accessible playground, rubberized surface, and shade structure in partnership with Playground Pals.

**New Parking**-Add 3-4 parking stalls near northwest side of park near playground area.

**Restroom Facility**  
Renovate/expand existing restroom facility to include an ADA/Family bathroom facility.

**Sidewalk**-Add a meandering sidewalk on the north perimeter areas of the park for accessibility.

**Site Lighting**-Replace four lights.

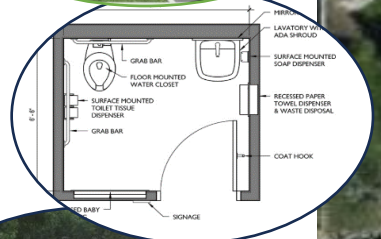
**Fishing Platforms**-Install two fishing platforms along the north and south shores.

**Piers**-Remove existing L shaped pier and reengineer the three smaller piers.

**Park Entrance Sign**- Create an entrance area to the park along the east side of the park with a site sign, flowers and sidewalks. Add a site sign on the corner of Mill and Water Street.

**Dartford Sign** – Create a sitting area/reflection garden near the historical sign.

**Fence** Add a split rail fence along the apartment complex.



**Disclaimer:** *The City of Green Lake has reserved the right to make changes to this plan at any time. The intent of this conceptual site plan is for the purpose of fulfilling marketing objectives and future plan development.*